



VISIONS OF NATURE

Group exhibition: Oxford House and The Chelsea Fringe

oxfordhouse.org.uk





The exhibition shows a wide interpretation of nature. Each work reveals the relationship between the artist and the natural elements and shows the connections with nature are a part of their ordinary life.

Artists from different parts of Europe as well as the United States participate in this group exhibition. Works are in different formats including photography, painting and videos. The artworks reflect the Chelsea Fringe “spirit” and cover gardens, flowers and landscapes.

The exhibition encourages you to discover not only the material side of nature, but to think about its meaning. We invite you to share your passion for spring, gardening, and natural landscapes and let us know: What’s your vision of nature?

Oxford House Gallery
Curated by Federico Malosti and Christina Klus

Design by Christina Klus



Alexandra Pospelova
Carrie Grainger
Chloe Hayes
Daniel Agra
Daniel Wechsler
Ian Barrington
Izabela Leska
Jem Raid
Julia Ganotis
Laurence Bosmans
Paul Thomas
Penelope Anstruther
Samuel Deacon
Simone Truong
Sussi Hodel
Makenol Profil
Ulla Nolden



Garden of Eden, 20x30 cm, Luster paper
Alexandra Pospelova, United States



Wither, A3, Pencil, Ink, acrylic
Carrie Grainger, UK



Holt Forest North 2, A3, Photography
Chloe Hayes, UK

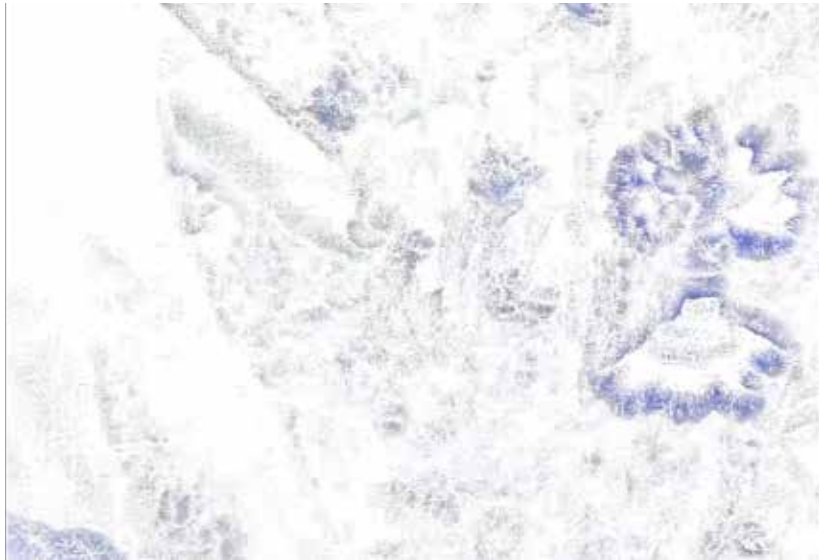
Tea Gardens, A3, Photography
Chloe Hayes UK



El Jardín de Entelequia, 40x60 cm, Photography
Daniel Agra, Spain

El Jardín de Entelequia, 40x60 cm, Photography
Daniel Agra, Spain





Or was it all a dream, 1920x1080, Video
Daniel Wechsler, UK

Diwali, 40x60 cm, Watercolour, Acrylic on Paper
Ian Barrington, UK





Spacery subiektywne obiekt z kasztanów, 40x40 cm, chestnuts, cardboard
Izabela Leska, Poland



Not actually there, 1280x720, Video
Jem Raid, UK





Seabreeze, 30 x 40 cm, Black pen on paper
Julia Ganotis, Finland



My life with you in color, 28x28 cm, photography and drawing on
Laurence Bosmans, Belgium

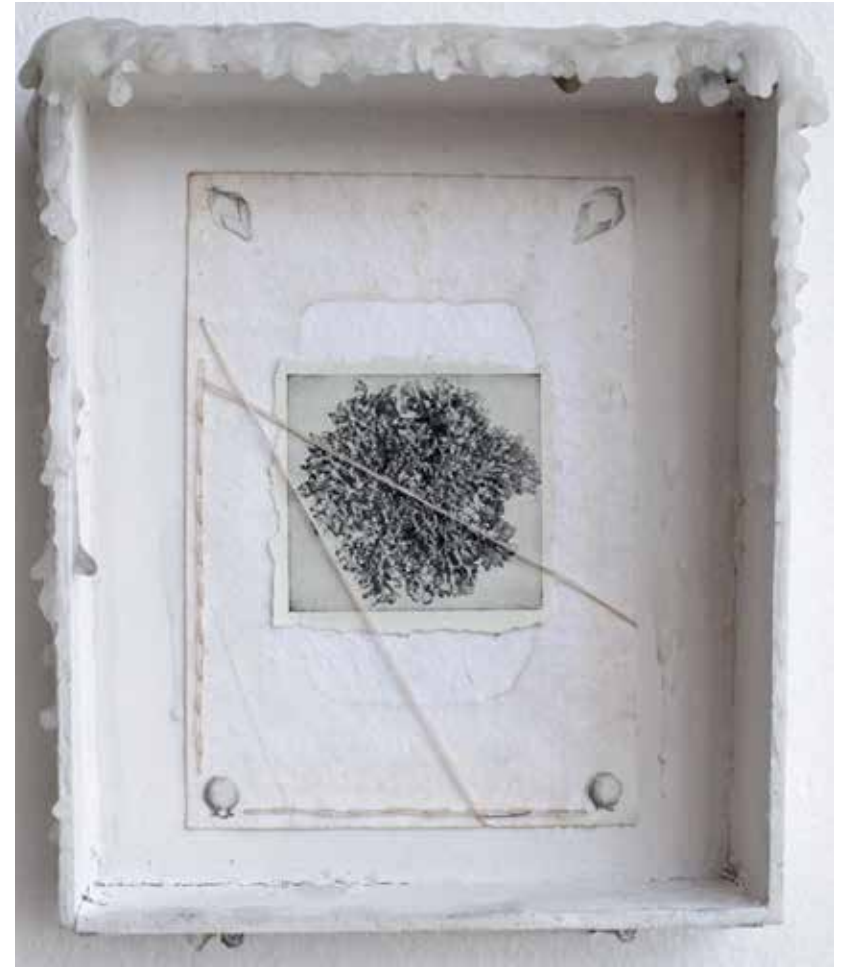




My little piece of blue sky, 10x10 cm, photography and drawing on
Laurence Bosmans, Belgium

Frozen lake, 71 x 56.5 cm, Acrylic on Canvas
Paul Thomas, UK

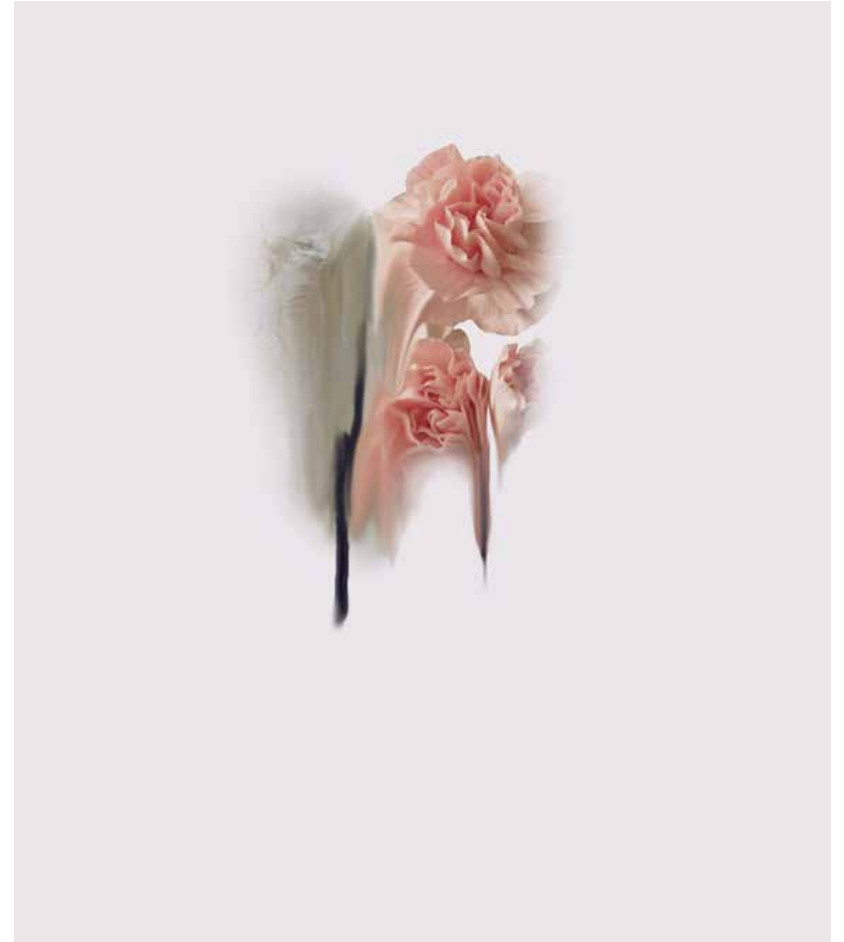




Westwards through the trees, 35.5 x 45.5 cm, Acrylic on Canvas
Paul Thomas, UK

Lichen, 16x13x3cm, wood, collage, sewing, wax
Penelope Anstruther, United States





Into the garden, 40x30 cm, Oil on Canvas
Samuel Deacon, UK

Ascending in inverse, 31 x 35 cm, Giclée print
Simone Truong, UK





Waldlandschaft, 70x90 cm, Oil on Canvas
Sussi Hodel, Switzerland



Mother Nature, 14x18 inch, Acrylic on canvas
Makenol Profil (THE smARTest PROJECT), Haiti





The source of life, 14x18 inch, Acrylic on canvas
Makenol Profil (THE smARTest PROJECT), Haiti



Everyday, 18x10 inch, Photography
Ulla Nolden. UK



Oxford House is where East London comes together to work, learn, explore and create. We celebrate arts, community and our heritage.

The Oh! Gallery is dedicated to supporting new or emergent artists and offers affordable gallery space.

Oxford House Gallery
Derbyshire Street, London E2 6HG
✉ gallery@oxfordhouse.org.uk
🐦 @oxhse



oxford house
in Bethnal Green



Newmans
Art Materials • Printing • Stationery